



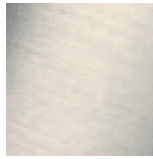
## Bathtub - VAIA

Wall mounted two-way diverter - platinum matte

Article number: 36 200 819-06 0010

Date of manufacture from 4/1/2022

- Manual diverter
- Flange diameter 2-3/8"
- with integrated shut-off
- (ADA)

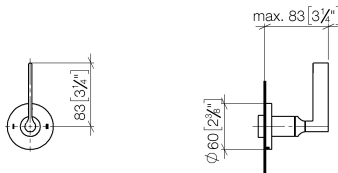


platinum matte

Accessory is required for this item.

## Dimensional drawing

mm [inches]



All dimensions in mm / inch = mm x 0,0394



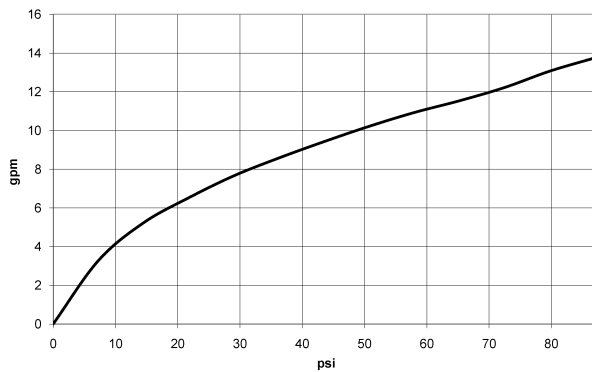
Bathtub - VAIA

Wall mounted two-way diverter - platinum matte

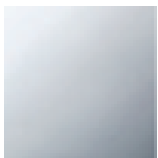
Article number: 36 200 819-06 0010

Date of manufacture from 4/1/2022

### Flow rate chart



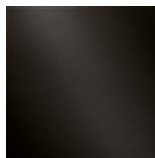
### Other surface finishes



polished chrome  
36 200 819-00 0010



Brushed durabronze (23kt)  
36 200 819-28 0010



Dark Platinum matte  
36 200 819-99 0010

More custom finish options are available via special production (xTra Service). Please see our finish matrix for availability and pricing or contact a Dornbracht representative.



Bathtub - VAIA

Wall mounted two-way diverter - platinum matte

Article number: 36 200 819-06 0010

Date of manufacture from 4/1/2022

NO IMAGE

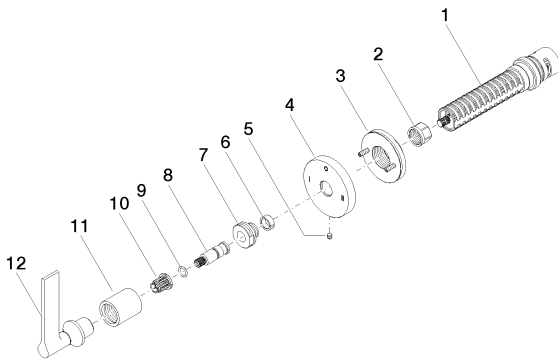


AVAILABLE

35 202 970-90 0010

Wall mounted two-way  
diverter -

## Spare parts list



Number	Item Number	Designation	Number of units
1	90 90 03 306 10 90	diverter	1
2	09 23 30 023 90	nut	1
3	90 21 02 181 00 90	disc	1
4	09 27 89 120-06	rosette	1
5	09 31 11 294 90	pin	1
6	09 14 15 020 90	ring	1
7	09 24 05 002 90	nipple	1
8	09 29 06 022 90	spindle	1
9	09 14 10 060 90	seal	1
10	90 12 12 002 00 90	fixing cap	1
11	09 21 02 070-06	cover	1
12	90 20 80 015 01-06	handle	1