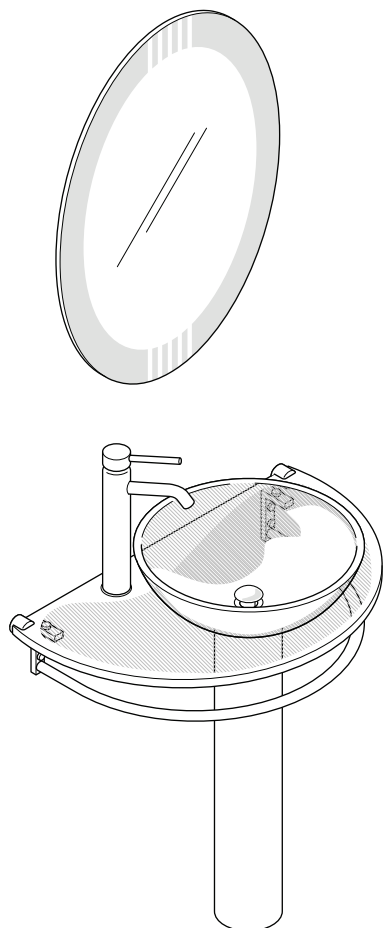
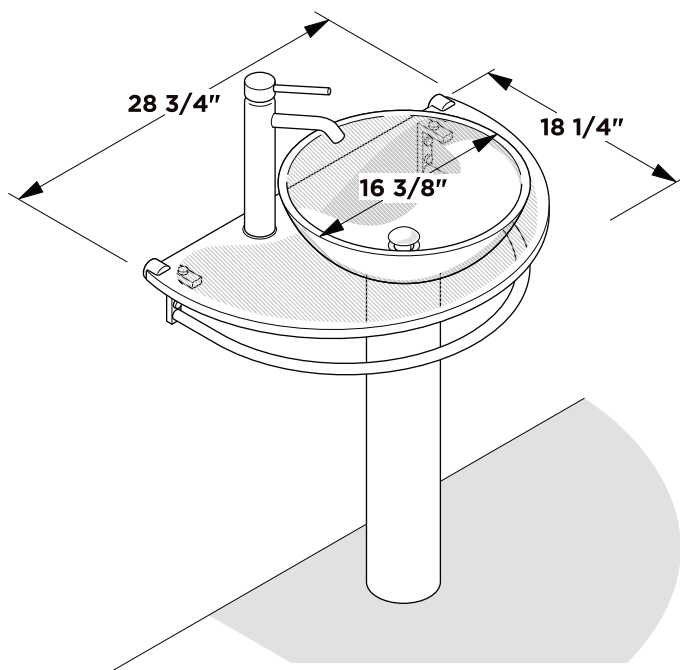




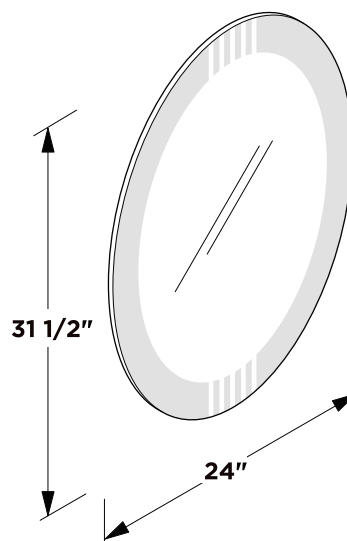
FVN1060  
ATTRAZIONE  
INSTALLATION GUIDE



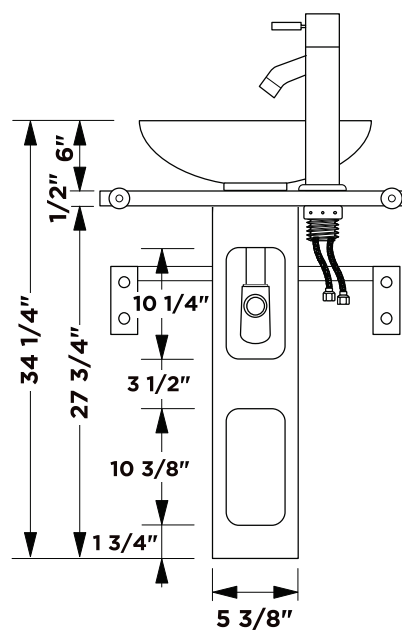
Vanity Front



Mirror

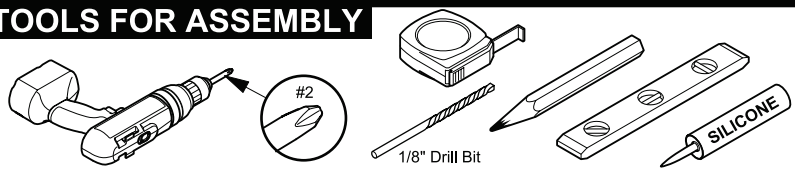


Vanity Back

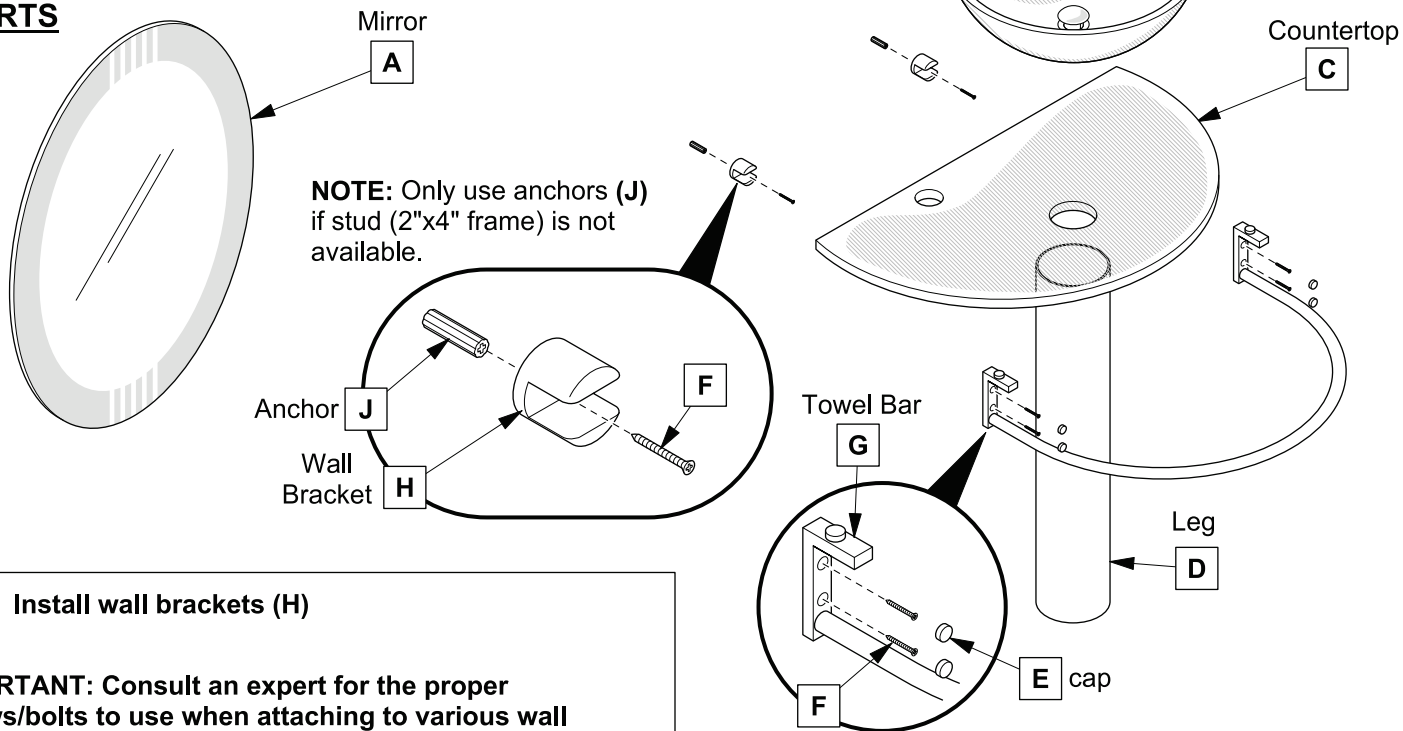


**Note:** All dimensions and specifications are approximate and subject to change without notice.

## TOOLS FOR ASSEMBLY



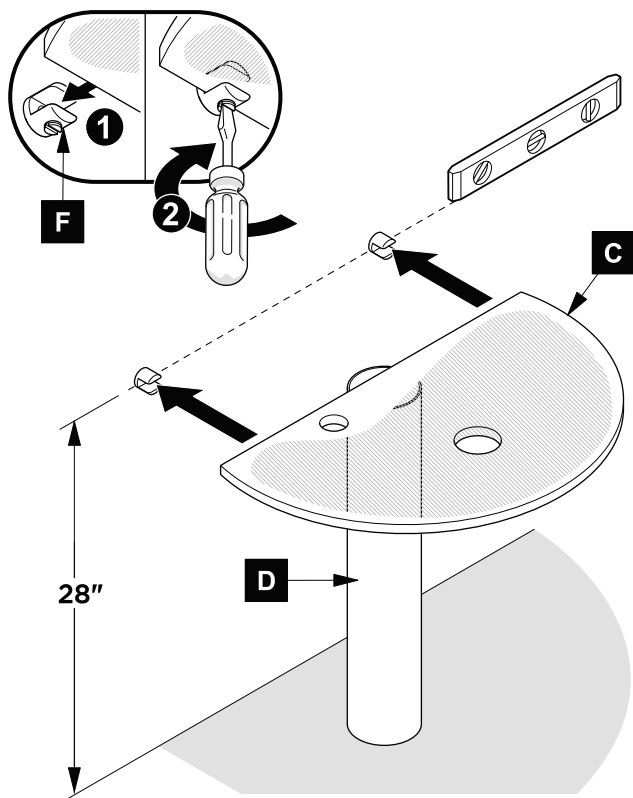
## PARTS



### 1 Install wall brackets (H)

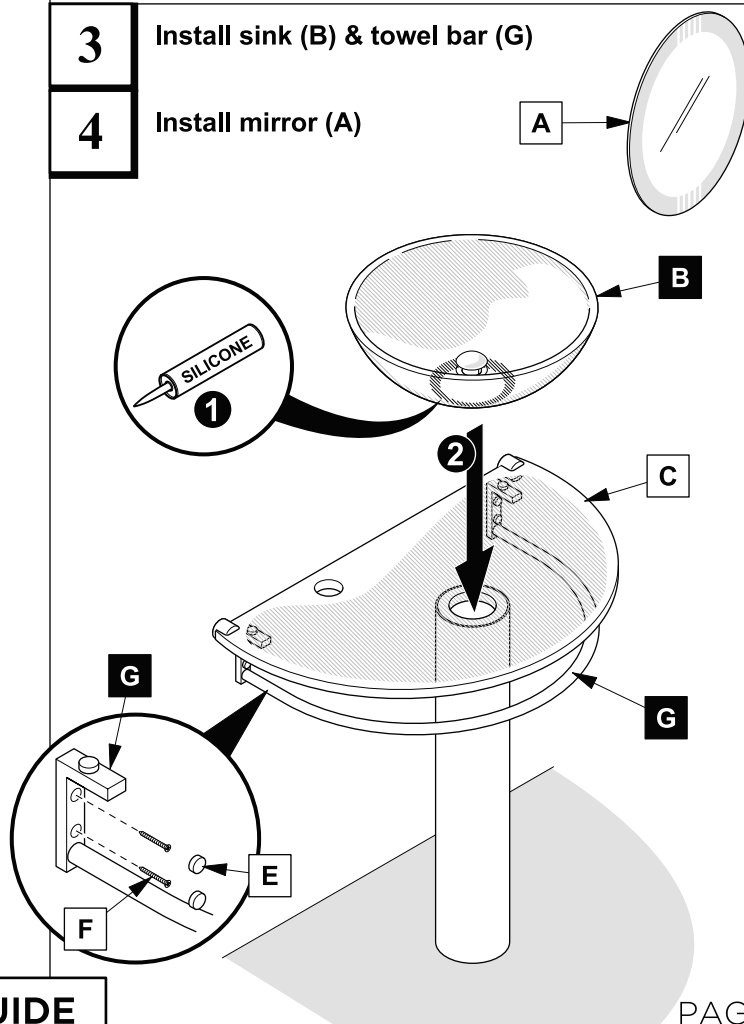
**IMPORTANT:** Consult an expert for the proper screws/bolts to use when attaching to various wall constructions. Screws provided do not attach to all wall construction types.

### 2 Locate leg (D) and install countertop (C)



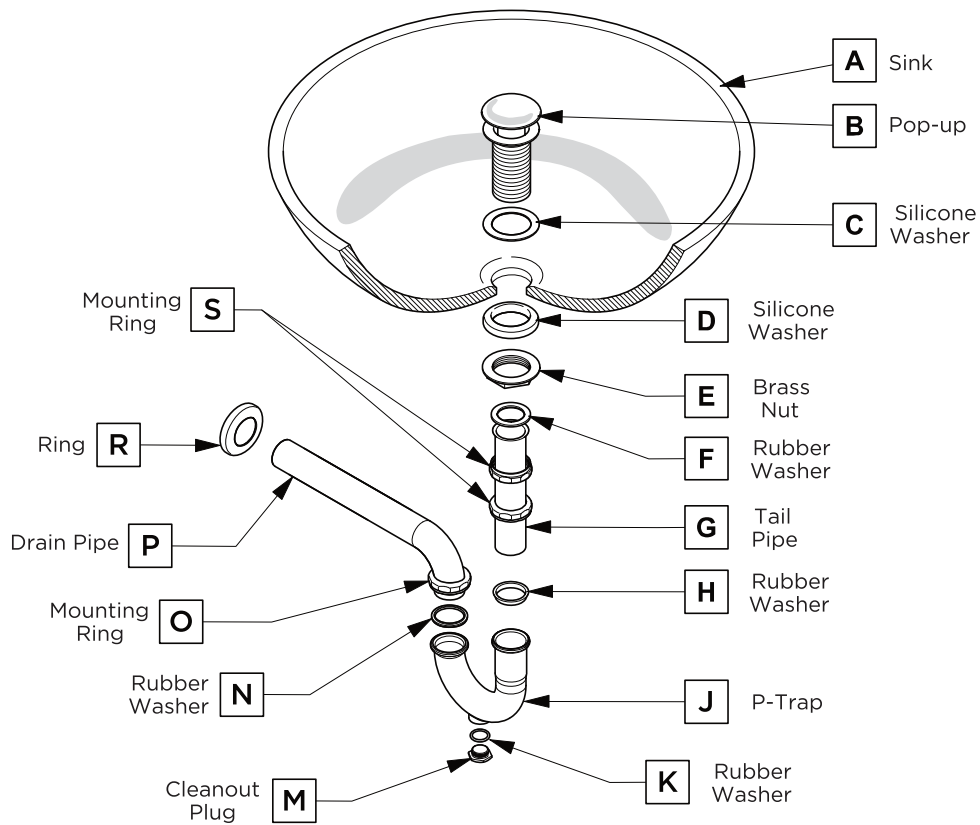
### 3 Install sink (B) & towel bar (G)

### 4 Install mirror (A)



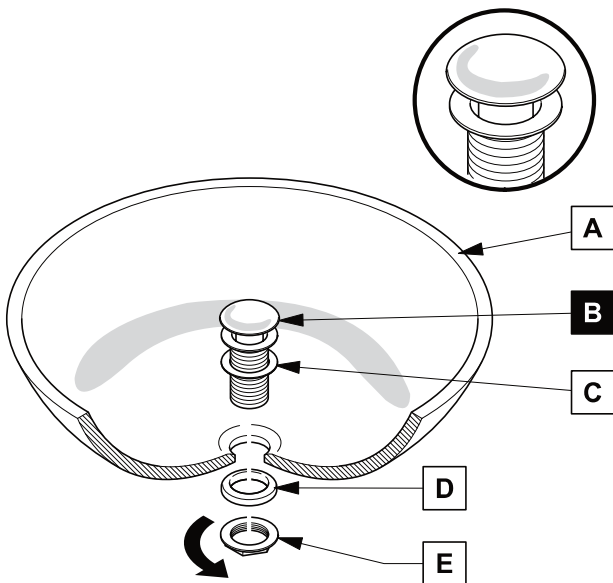
## P-TRAP AND POP-UP INSTALLATION INSTRUCTIONS

Your item may appear slightly different from the illustration



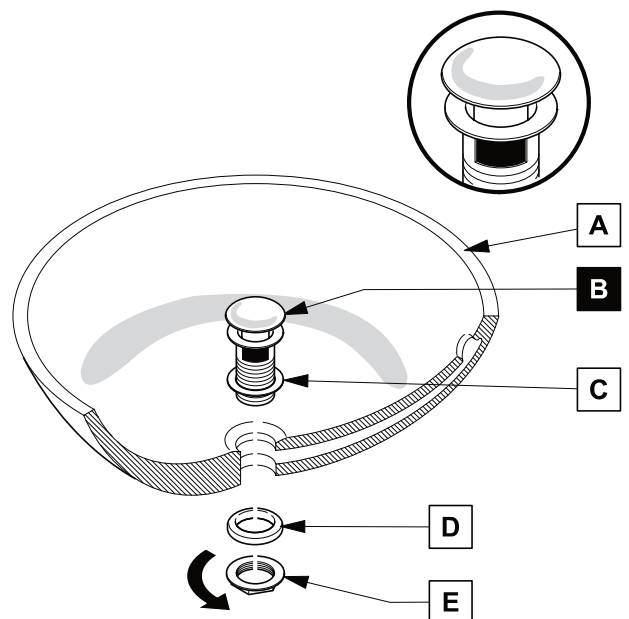
### POP-UP INSTALLATION

#### FOR SINKS WITHOUT OVERFLOW



OR

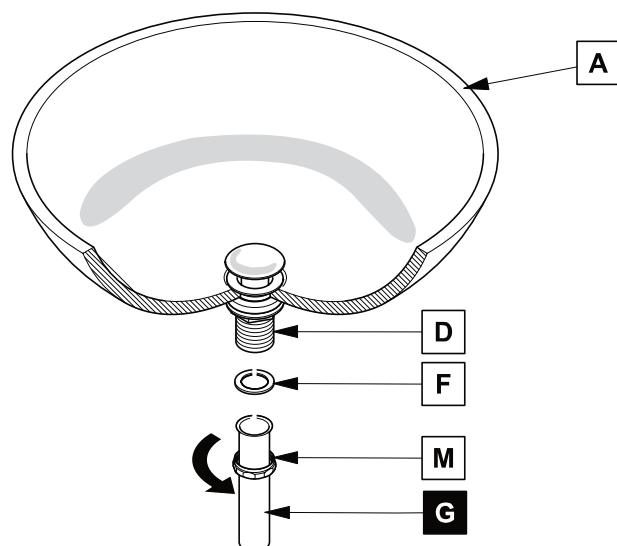
#### FOR SINKS WITH OVERFLOW



## P-TRAP INSTALLATION

1

Install tail pipe (G)



2

Install p-trap (J)

