

## KEY FEATURES

### Performance

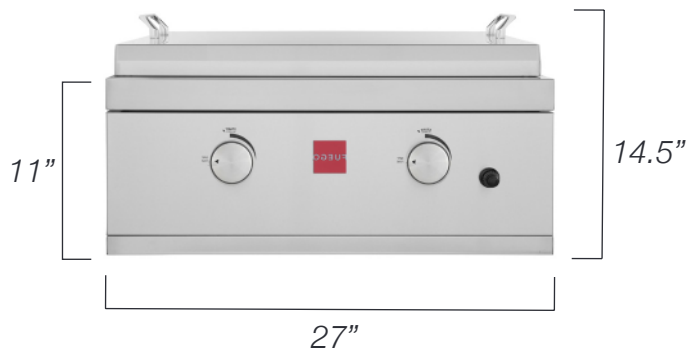
- Two U Shaped 304 SS Burners
- Combined 40,000 BTU/hr
- 400 sq. in. griddle surface
- Overall temperatures range from 250F to 650F
- Heats up to 400F in just 5 minutes

### Features & Benefits

- All 304 Stainless Steel Construction
- LED Backlit Control Knobs (Battery Operated)
- Fully Assembled Packaging
- Completely Welded Firebox
- Push Button Electronic Ignition
- Easy-To-Clean Hidden Residue Tray
- Heavy Duty 8mm Solid 304SS Cooking Griddle
- Easy To Remove Griddle Top Cover
- NG and LP Options Available
- Limited Lifetime Warranty

### Optional Accessories

- FSAOC3 - Outdoor Cover (2 Color Choices)



Sleek Front Panel Design



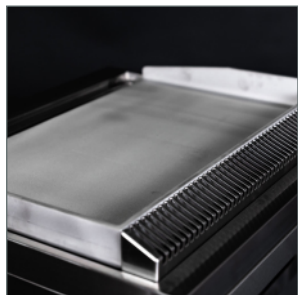
Heavy Duty 8mm Griddle



Premium Burners



LED Backlit Knobs



Rear Top Vents



Meat, Veggies & More



Griddle Top Cover



Easy Mount Side Brackets



## TECHNICAL SPECS

<b>Dimensions:</b>	27" W   24" D   23" H (Lid Closed) 27" W   29" D   36" H (Lid Open)		
<b>Package Dimensions:</b>	34" W   30" D   32" H		
<b>Package Weight:</b>	119 Pounds		
<b>Gas Requirements:</b>	40,000 BTU/hr Natural Gas and Propane Options		
<b>Grill Type:</b>	Built-In		
<b>Clearance To Combustibles:</b>	Sides:	24"	
	Rear:	24"	
<b>Cutout Dimensions</b>	Width:	27 3/8"	(A)
	Depth :	23 7/8"	(B)
	Height:	11 1/8"	(C)
<b>Island Dimensions (Recommended)</b>	Depth:	30"	(D)
	Height:	36"	(E)
<b>Mounting Brackets</b>	Each built-in grill comes with a set of mounting brackets that allows the unit to suspend on top of the countertop opening for a flush mount look and feel.		

