



**Cimarron®**  
Drop-in Bathroom Sink  
**K-2351-1**

**Features**

- Single faucet hole.
- Overflow drain.
- Coordinates with other products in the Cimarron collection.

**Material**

- Vitreous china.

**Installation**

- Drop-in.

**Recommended Products/Accessories**

K-8998 P-Trap



ADA

CSA B651

OBC

**Codes/Standards**

ASME A112.19.2/CSA B45.1

ADA

ICC/ANSI A117.1

CSA B651








OBC

**KOHLER® One-Year Limited Warranty**

See website for detailed warranty information.

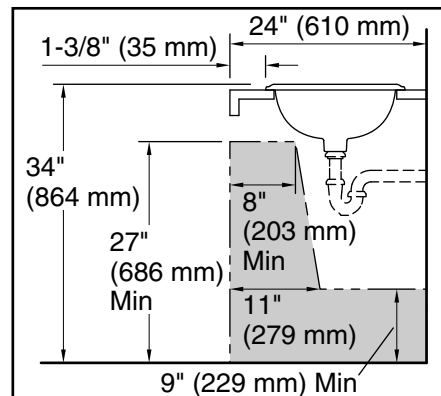
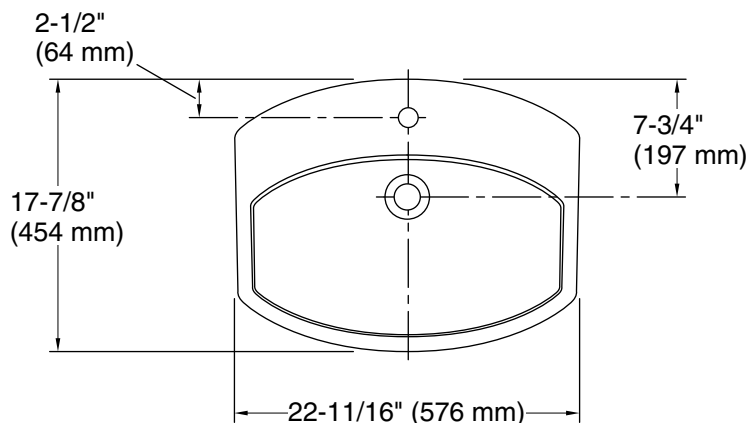
**Available Colors/Finishes**

*Color tiles intended for reference only.*

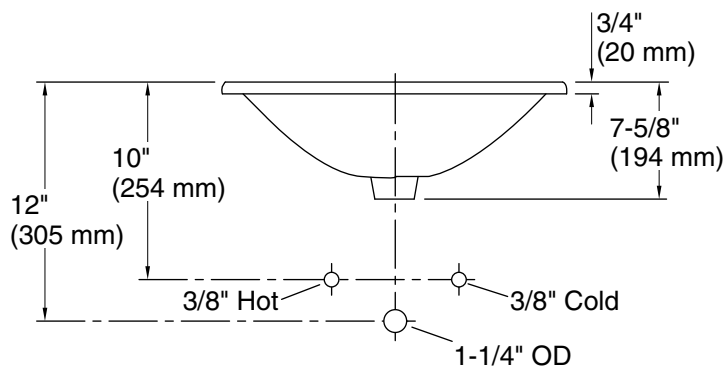
Color	Code	Description
	0	White
	96	Biscuit
	47	Almond
	NY	Dune
	95	Ice™ Grey
	G9	Sandbar
	7	Black Black™

# KOHLER®

## Cimarron® Drop-in Bathroom Sink K-2351-1



Recommended ADA Installation



### Technical Information

All product dimensions are nominal.

Bowl configuration: Single

Installation: Drop-in

Bowl area (Only): Length: 20-3/8" (518 mm)  
Width: 11-1/2" (292 mm)  
Water depth: 3-5/8" (92 mm)

Number of deck holes: 1

Faucet hole(s): 1-3/8" (35 mm)

Drain hole: 1-3/4" (44 mm)

Template: 1017302-7, required, included

### Notes

Install this product according to the installation instructions.

NOTICE: Countertop manufacturer or cutter must use the cut-out template provided with the product, or a current one provided by Kohler Co. (call 1-800-4KOHLER). Kohler Co. is not responsible for cutout errors when the incorrect cut-out template is used.

ADA, OBC, CSA B651 compliant when installed to the specific requirements of these regulations.