



**Serif®**

Under-mount Bathroom Sink  
**K-2824**

**Features**

- Oval basin.
- No faucet holes; requires wall- or counter-mount faucet.
- Coordinates with other products in the Serif collection.

**Material**

- KOHLER® enameled cast iron.

**Installation**

- Under-mount.

**Recommended Products/Accessories**

K-9018 P-Trap

**Included Components**

Additional Components:

1193643 Basin clamps



ADA

CSA B651

**Codes/Standards**

ASME A112.19.1/CSA B45.2

ADA

ICC/ANSI A117.1

CSA B651

**Lifetime Limited Warranty for  
KOHLER® Cast Iron Components**

See website for detailed warranty information.

**Available Colors/Finishes**

*Color tiles intended for reference only.*

Color	Code	Description
	0	White
	FF	Sea Salt™
	96	Biscuit
	47	Almond
	FD	Cane Sugar™
	NY	Dune
	Y2	Sunlight
	95	Ice™ Grey
	G9	Sandbar
	KC	Vapour™ Blue
	KG	Vapour™ Green
	FT	Basalt
	20	Suede
	KA	Black 'n Tan

1-800-4KOHLER (1-800-456-4537)

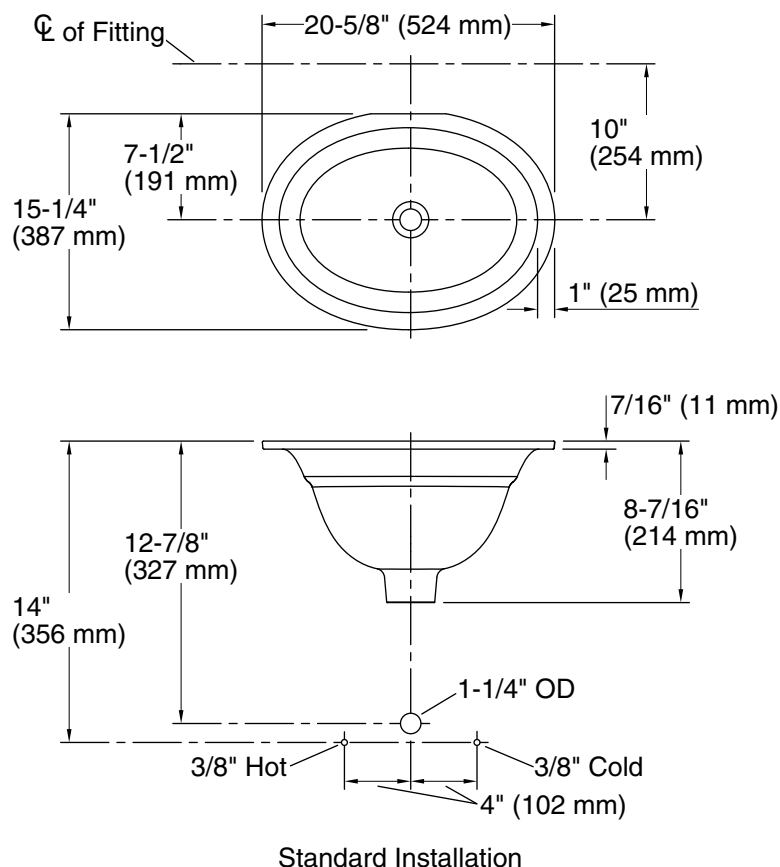
Kohler Co. reserves the right to make revisions without notice to product specifications.

For the most current Specification Sheet, go to [www.kohler.com](http://www.kohler.com).

12-24-2019 11:43 - US/CA/MX

THE BOLD LOOK  
OF **KOHLER®**

## Under-mount Bathroom Sink K-2824



### Technical Information

All product dimensions are nominal.

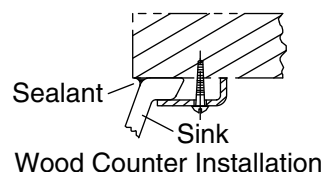
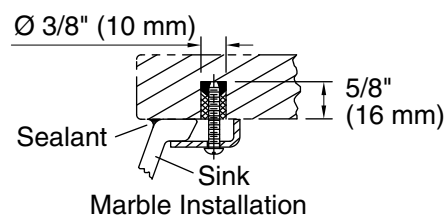
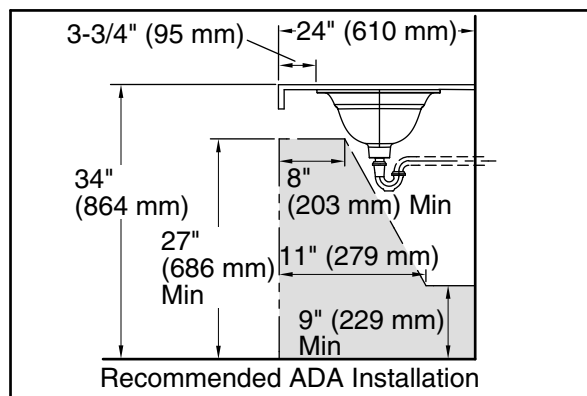
Bowl configuration: Single

Installation: Under-mount

Bowl area (Only): Length: 17-3/4" (451 mm)  
Width: 12-3/4" (324 mm)  
Water depth: 6-7/16" (164 mm)

Drain hole: 1-5/8" (41 mm)

Template: 1039083-7, required, included



### Notes

Install this product according to the installation instructions.

Supplied basin clamp assemblies require 1" (25 mm) minimum countertop thickness. Installer must supply anchors for thinner countertops.

NOTICE: The countertop manufacturer or cutter must use the cutout template provided with the product, or a current one provided by the Kohler Co. (call 1-800-4KOHLER). Kohler Co. is not responsible for cutout errors when the incorrect cutout template is used.

ADA, CSA B651 compliant when installed to the specific requirements of these regulations.