



**Tahoe®**  
Under-mount Bathroom Sink  
**K-2890-4U**

**Features**

- 4-inch center faucet holes.
- Overflow drain.
- Single-hole center-mount or 4" centers.

**Material**

- KOHLER® enameled cast iron.

**Installation**

- Under-mount.
- Drilled oversized to accommodate single-hole centermount or centerset faucet.

**Recommended Products/Accessories**

K-8998 P-Trap

**Included Components**

Additional Components:

1193643 Basin clamps



ADA

CSA B651

**Codes/Standards**

ASME A112.19.1/CSA B45.2

ADA

ICC/ANSI A117.1

CSA B651

**Lifetime Limited Warranty for  
KOHLER® Cast Iron Components**

See website for detailed warranty information.

**Available Colors/Finishes**

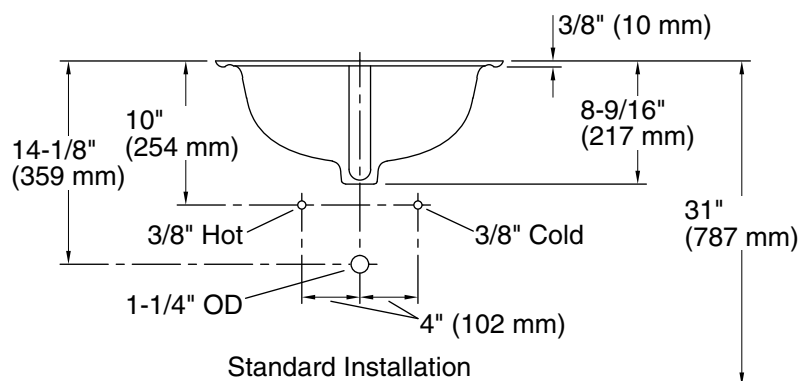
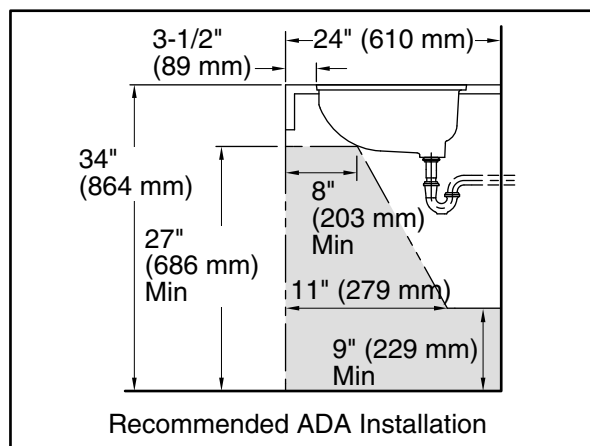
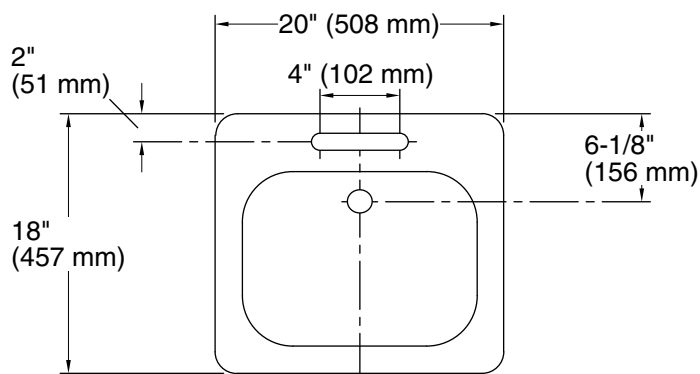
*Color tiles intended for reference only.*

**Color Code Description**



0 White

96 Biscuit



### Technical Information

All product dimensions are nominal.

Bowl configuration: Single

Installation: Under-mount

Bowl area (Only): Length: 16" (406 mm)  
Width: 12" (305 mm)  
Water depth: 5" (127 mm)

Number of deck holes: 3

Faucet hole spacing: 4" (102 mm)

Faucet hole(s): 2-1/8" (54 mm)

Drain hole: 1-11/16" (43 mm)

Template: 114409-7, required, included

### Notes

Install this product according to the installation instructions.

ADA, CSA B651 compliant when installed to the specific requirements of these regulations.