

28	Allen key
----	-----------



ASME A112.18.1/CSA B125.1

Basin wrench

Channel Locks

Goggles

Adjustable Wrench

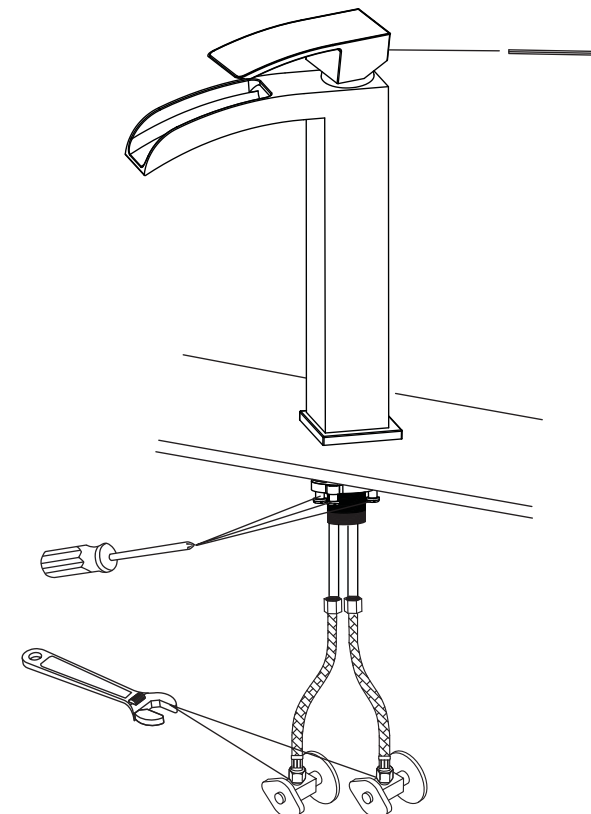
Teflon tape

Allen key

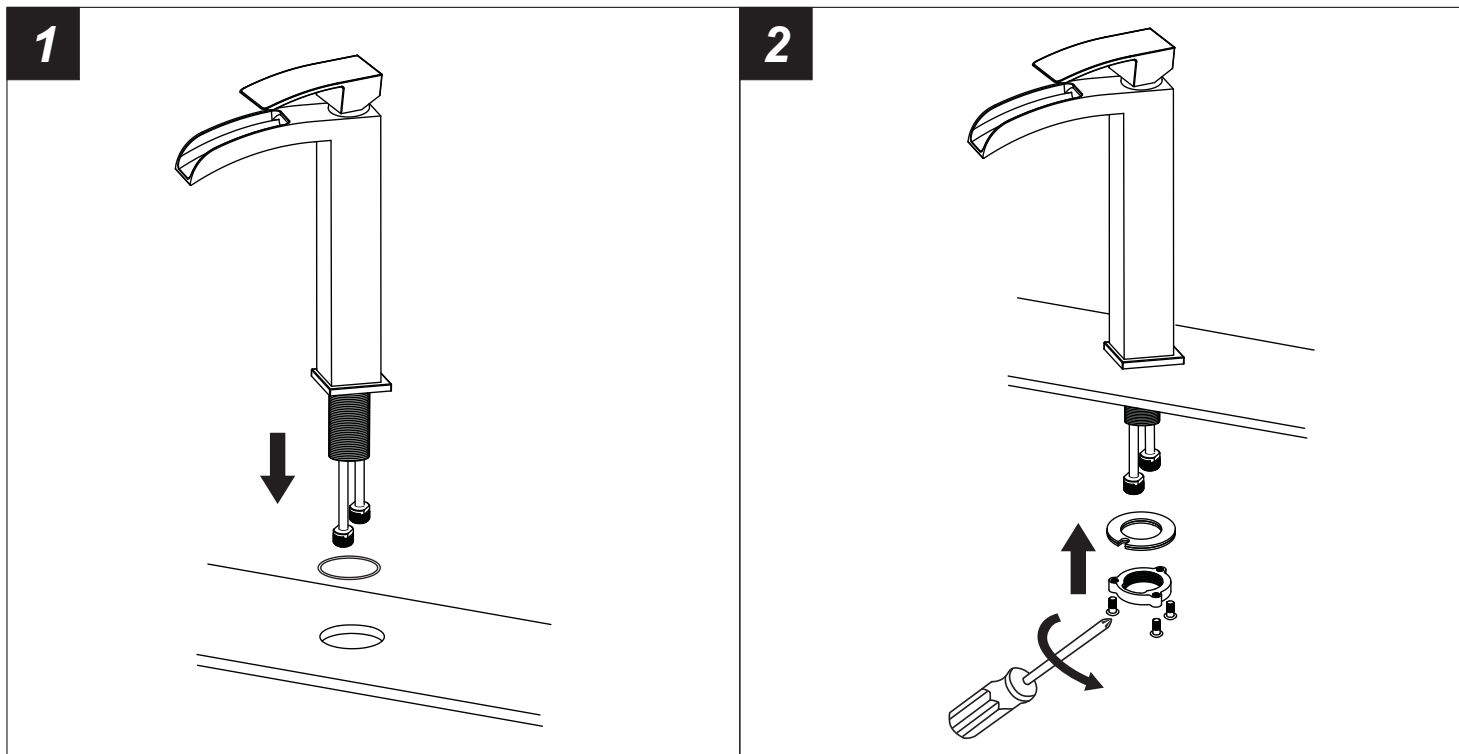
! WARNING: Please keep the tool for future use!



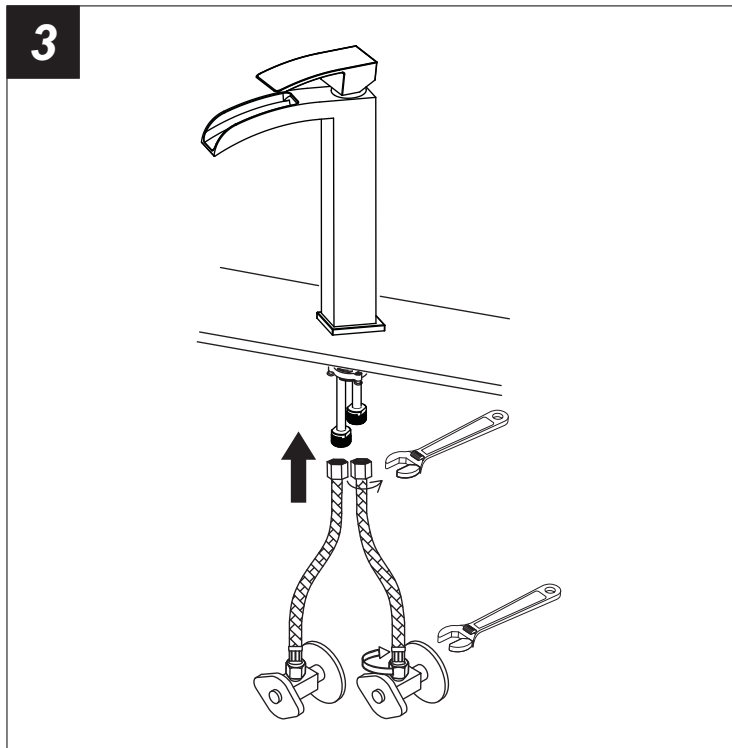
The tools might be applied to the following places:



Step 1 Faucet installation



- 1.Position the faucet in the installation surface as shown.
- 2.Adjust the position of the faucet and secure it with the fixing kit as photo.



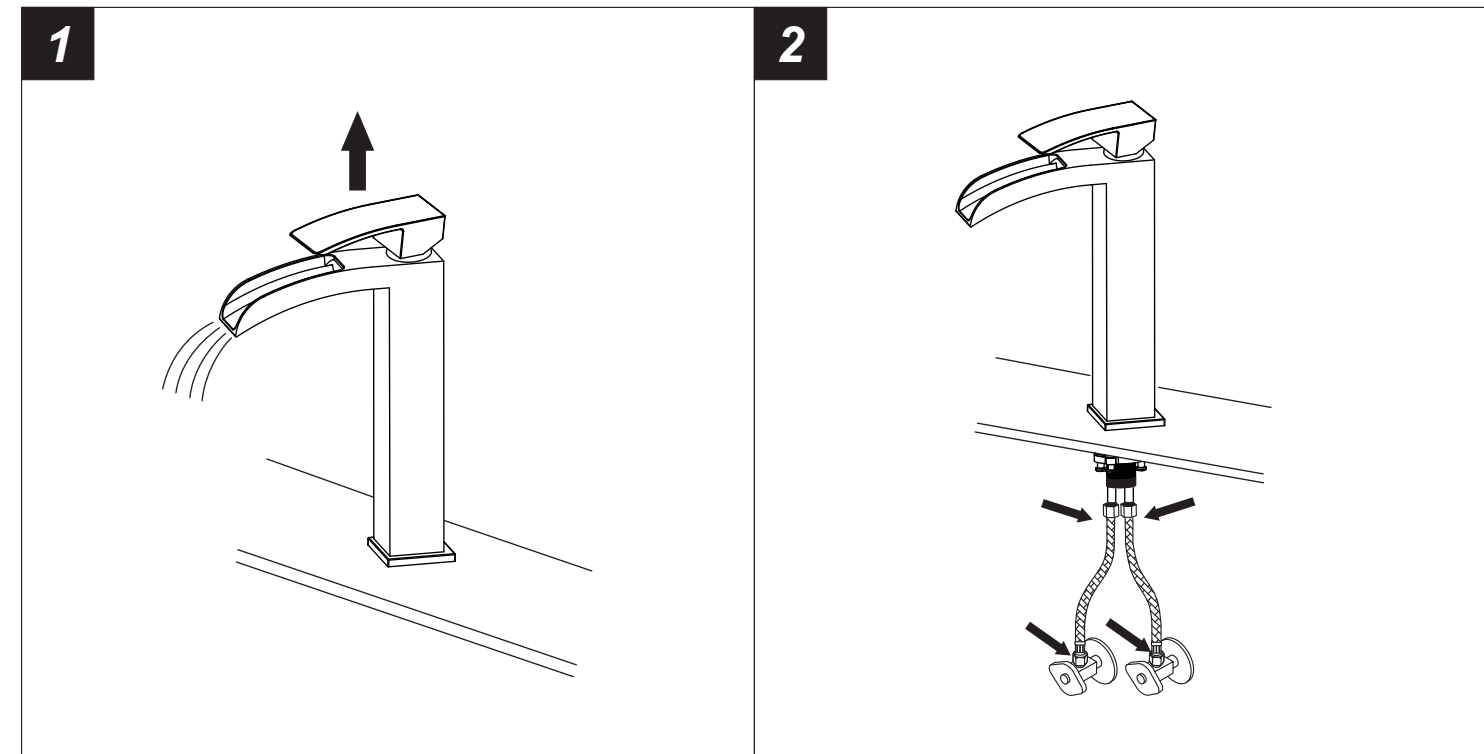
- 3.Connect the flexible hoses to water supply valve (not included) and copper tubes, and tighten it with adjustable wrench. **DON'T OVER TIGHTEN!**

Caution: make sure connect the hot and cold flexible hose to supply valves correctly.



Warning: The supply valves are not included, please purchase them in plumbshop.

Step 2 Checking and testing



- 1.Turn the faucet handle all the way on, turn on hot and cold water supply and flush water lines for one minute.
- 2.Check all connections at arrows for leaks, re-tighten it if necessary.



BUT DON'T OVERTIGHTEN

Step 3 Cleaning and care

Daily cleaning and care are required in order to keep the product shining and properly working.

- 1 Clean it with water and dry it with soft cloth.
- 2 Clean the product with gentle liquid or glass cleaner.
- 3 Don't use acid cleaner.
- 4 Don't clean with abrasive material, abrasive paper or knife.